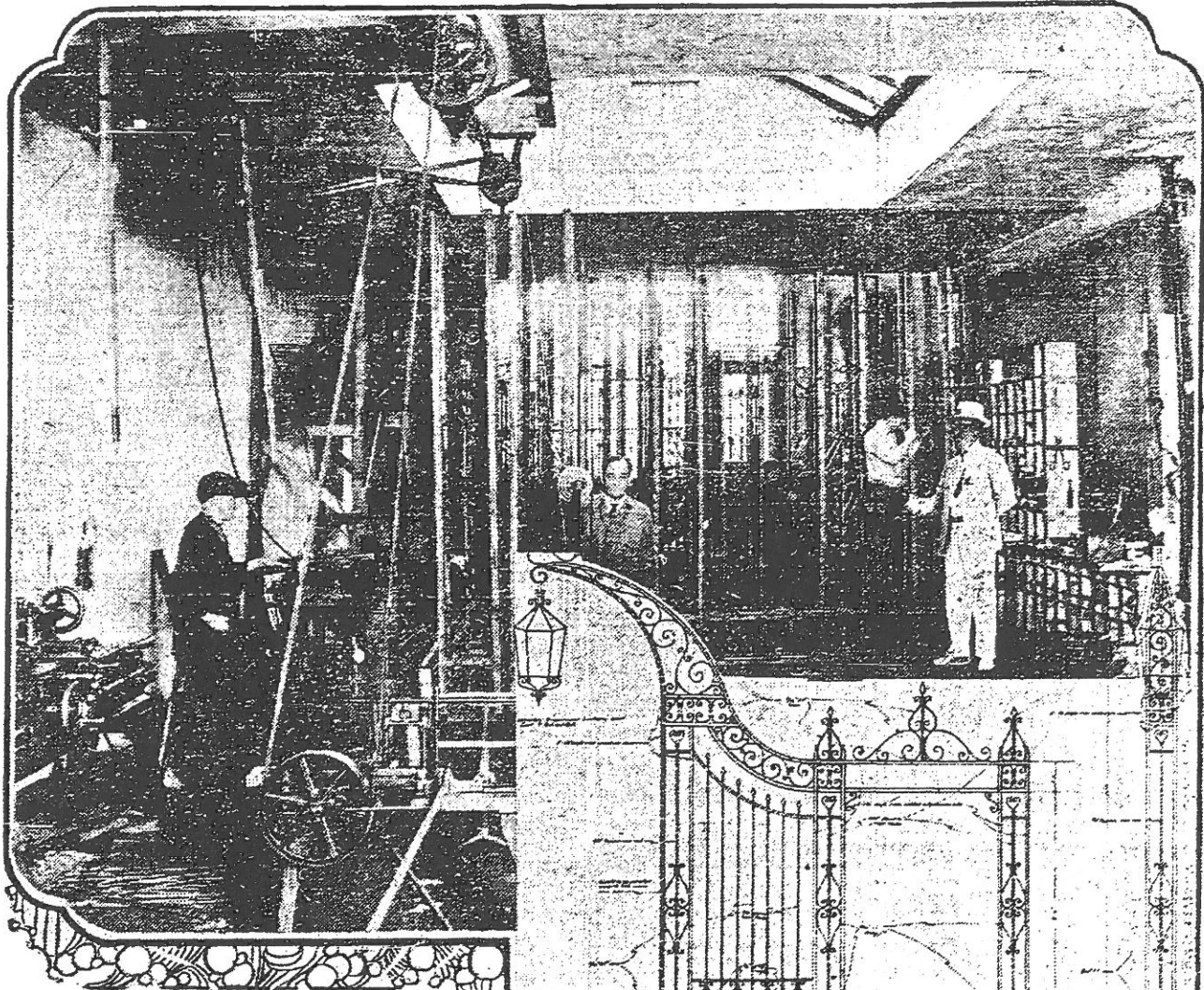


Lineal Footage of Steel in Magnificent Ornamental Gateways for Greater Talmadge Park Almost Equal Height of Mt. Everest, World's Highest Mountain Peak; Tract's Free Public Luncheon-Lectures Attract Throngs



TALMADGE PARK, always known as "The Residential District Beautiful," is to have its charms still further enhanced by a series of wrought-iron gateways in artistic Spanish scrollwork which will extend over the sidewalks and parkways and carry illuminated lanterns to light the streets.

Designs are by Frank R. Carlson, engineer, and manufacture is by the Union Machine Works of 716 First St. Roy C. Lichty, business manager of Greater Talmadge Park, has appropriated several thousand dollars for this one unit of beautification for his magnificent Mission Valley rim residential park.

Crowds are still flocking to Talmadge Tavern every Sunday, Tuesday, Thursday and Friday for the free noon public luncheons and lectures, the latter delivered by Captain Nelson G. Welburn, nationally known lecturer and economist. This attraction is in conjunction with the present residence-building and development programs which have made Talmadge Park construction "hot spot" of the city.

Accompanying views show Roy C. Lichty (at right) inspecting the new ornamental gates, together with draughtsmen's details of the gateways. An idea of the amount of steel used in the construction is that the 25,000 lineal feet is almost the height of Mt. Everest in Asia, world's highest mountain.

